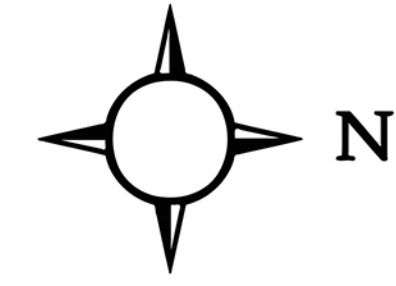


62 GOVERNMENT ST

VICTORIA, BC

4 BEDROOMS 5 BATHROOMS 2649 SQ FT



GROSS INTERNAL AREA

FIRST FLOOR  
CEILING HEIGHT 8' FT 812 sq.ft

SECOND FLOOR  
CEILING HEIGHT 9' FT 897 sq.ft

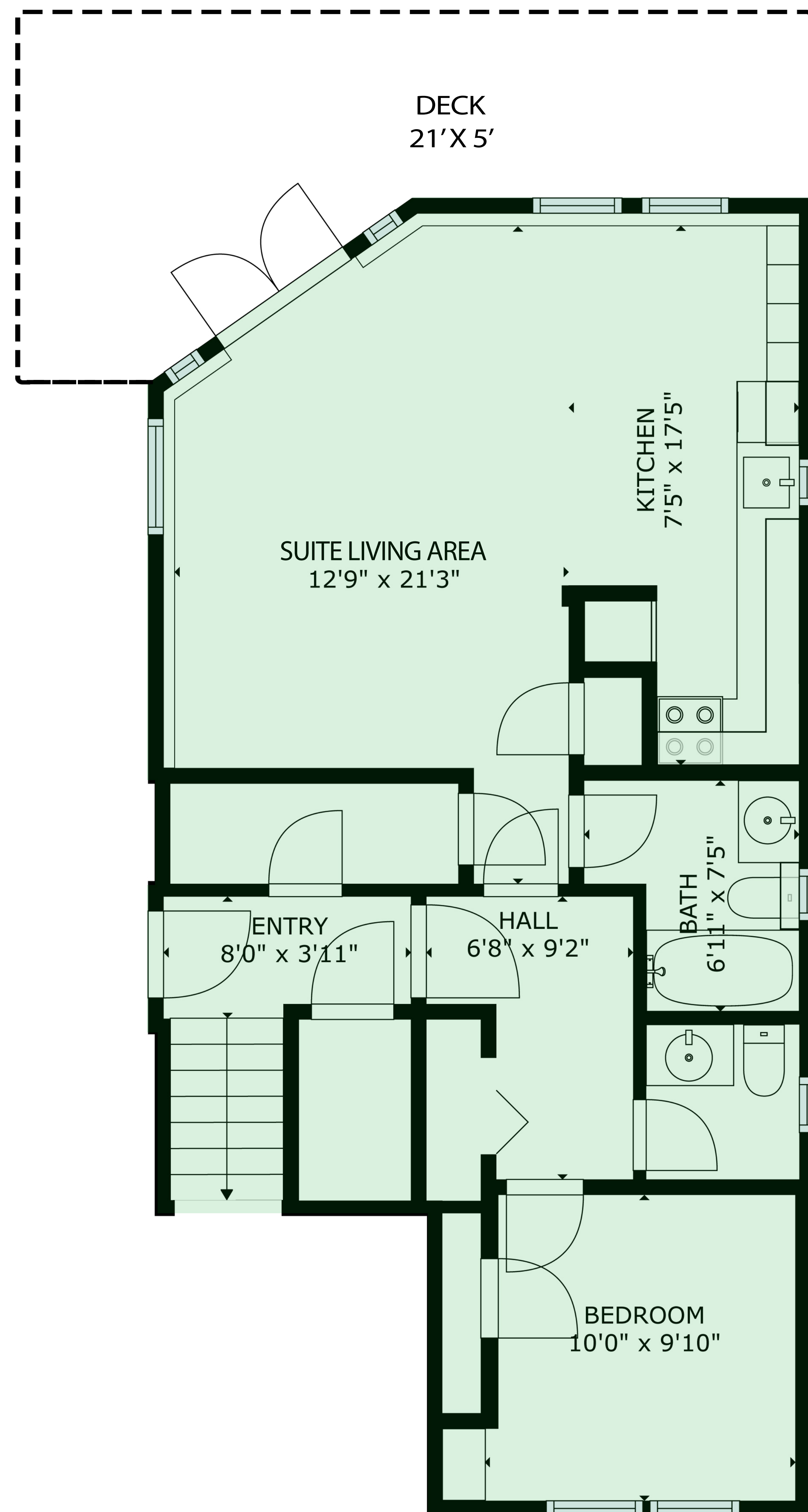
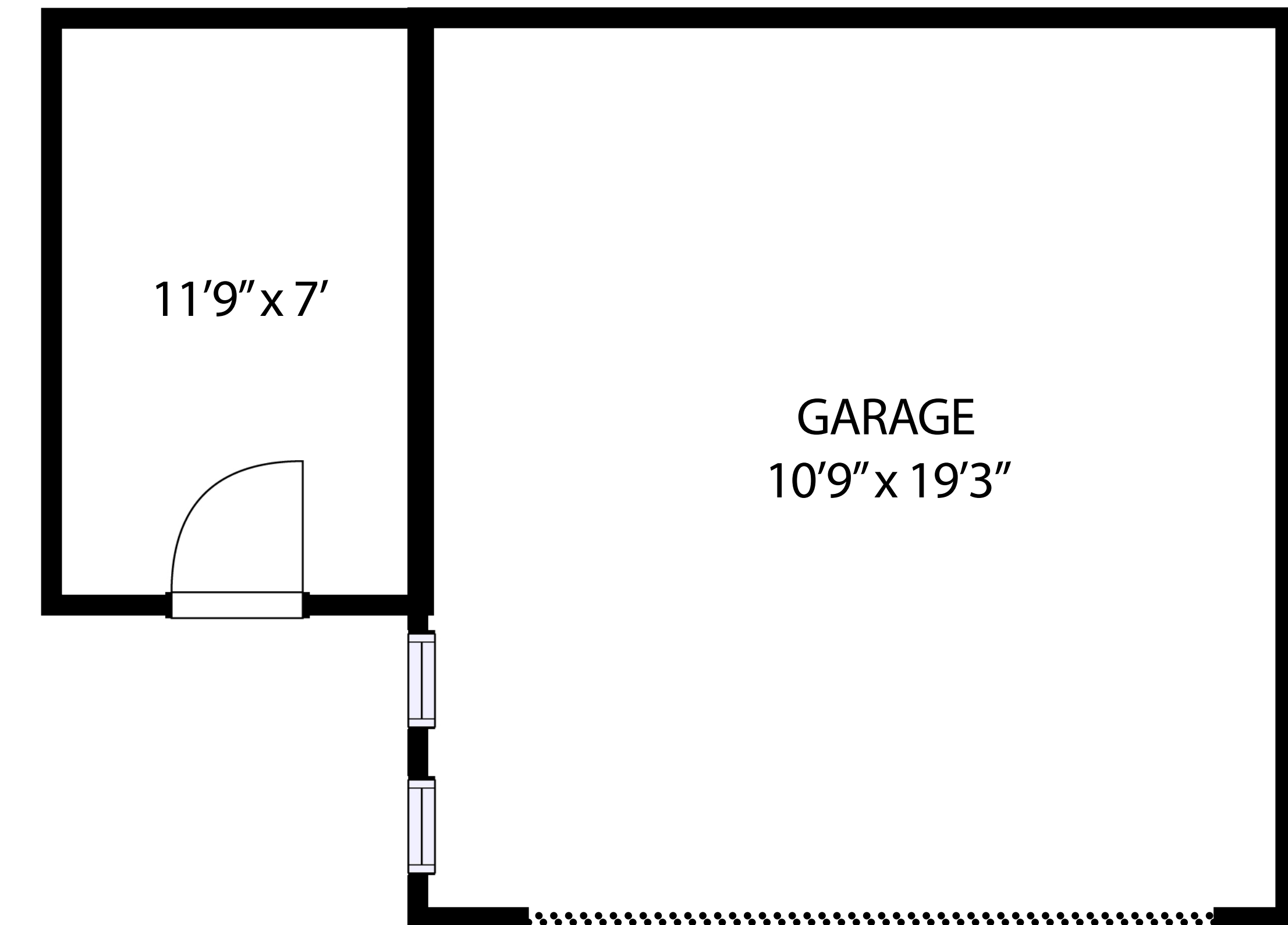
THIRD FLOOR  
CEILING HEIGHT 8-10' FT 850 sq.ft

TOTAL FINISHED SQFT 2649 sq.ft

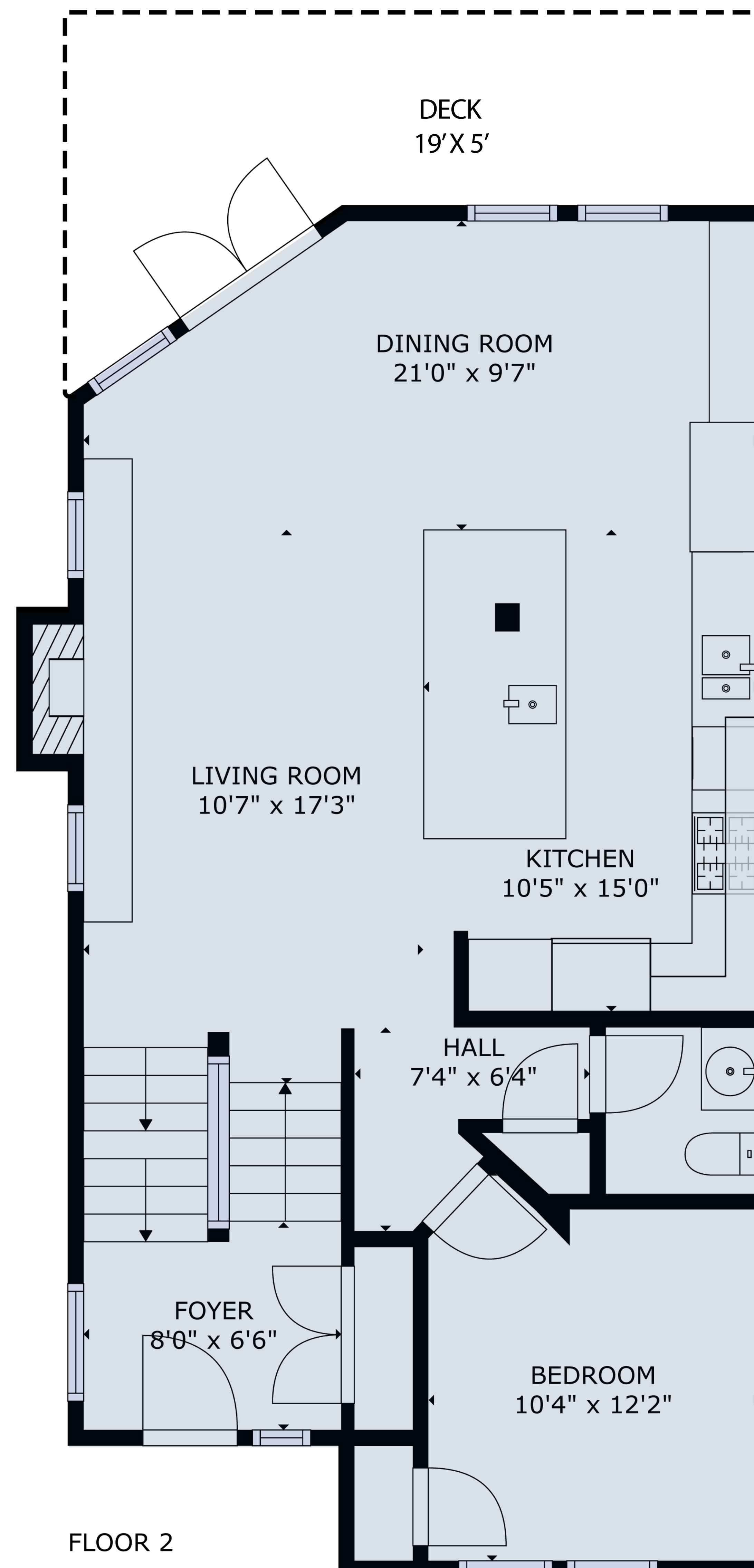
UNFINISHED SQFT

PATIO/DECKS 200 sq.ft

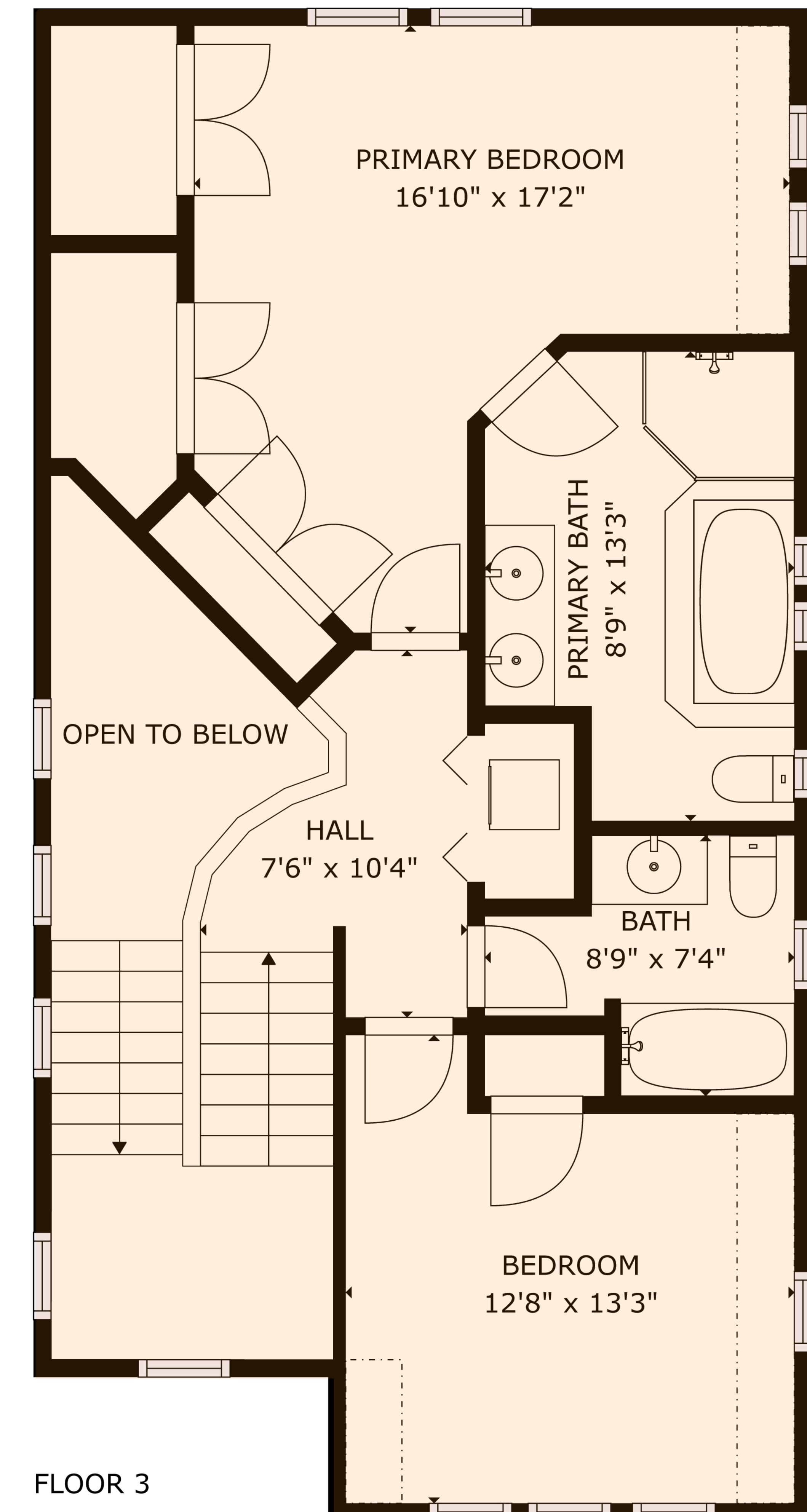
GARAGE 293 sq.ft



FLOOR 1



FLOOR 2



FLOOR 3