

1006-622 ADMIRALS RD

VICTORIA BC



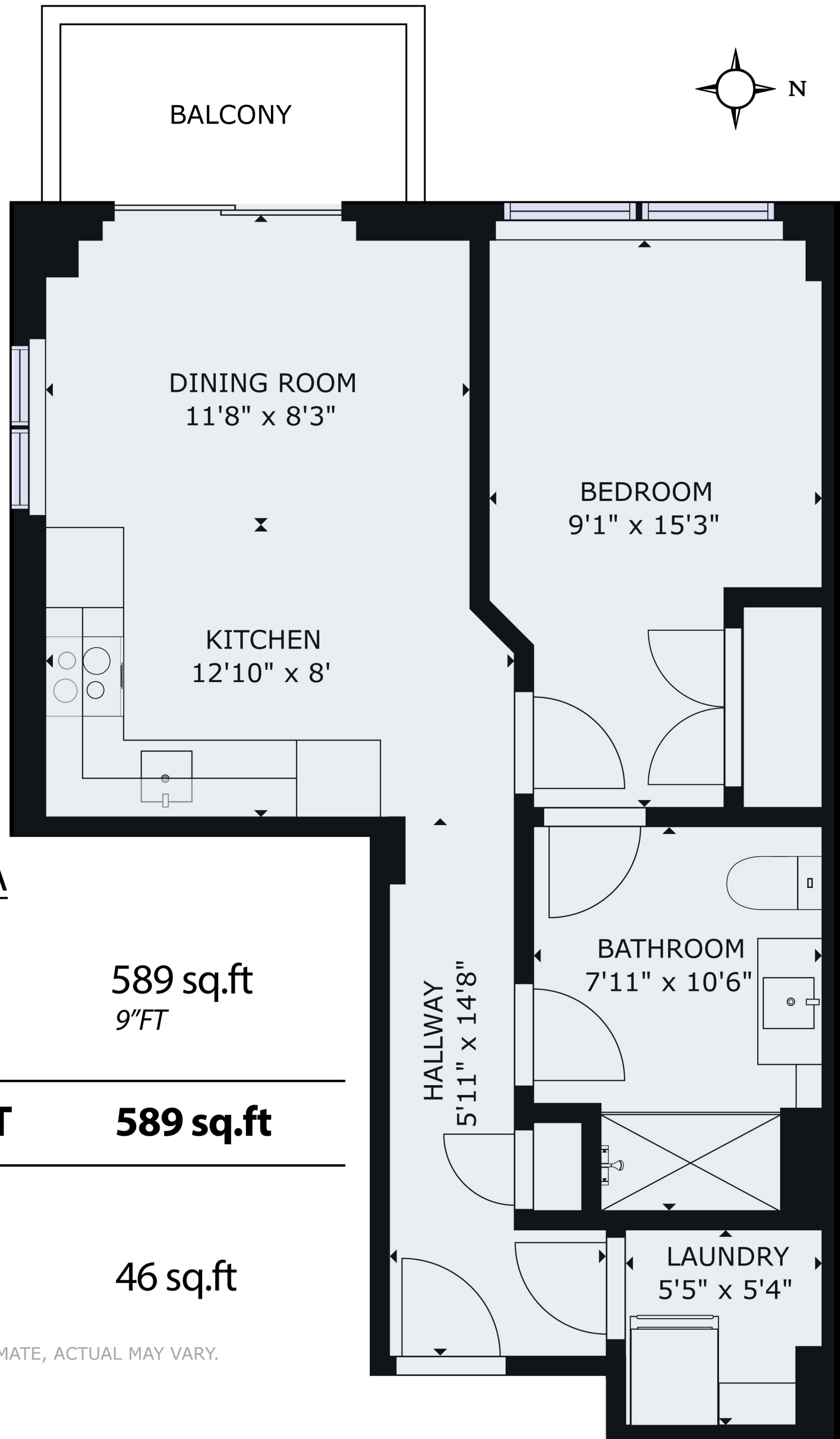
1 BEDROOMS



1 BATHROOMS



589 SQ FT



GROSS INTERNAL AREA

MAIN FLOOR
CEILING HEIGHT

589 sq.ft
9'FT

TOTAL FINISHED SQFT

589 sq.ft

EXCLUDED SQFT
PATIO

46 sq.ft

SIZES AND DIMENSIONS ARE APPROXIMATE, ACTUAL MAY VARY.

Johnny Olarte
REAL ESTATE

