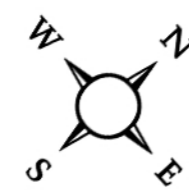


C-2230 PHILLIPS RD

SOOKE, BC

3 BEDROOMS 3 BATHROOMS 3025 SQ.FT



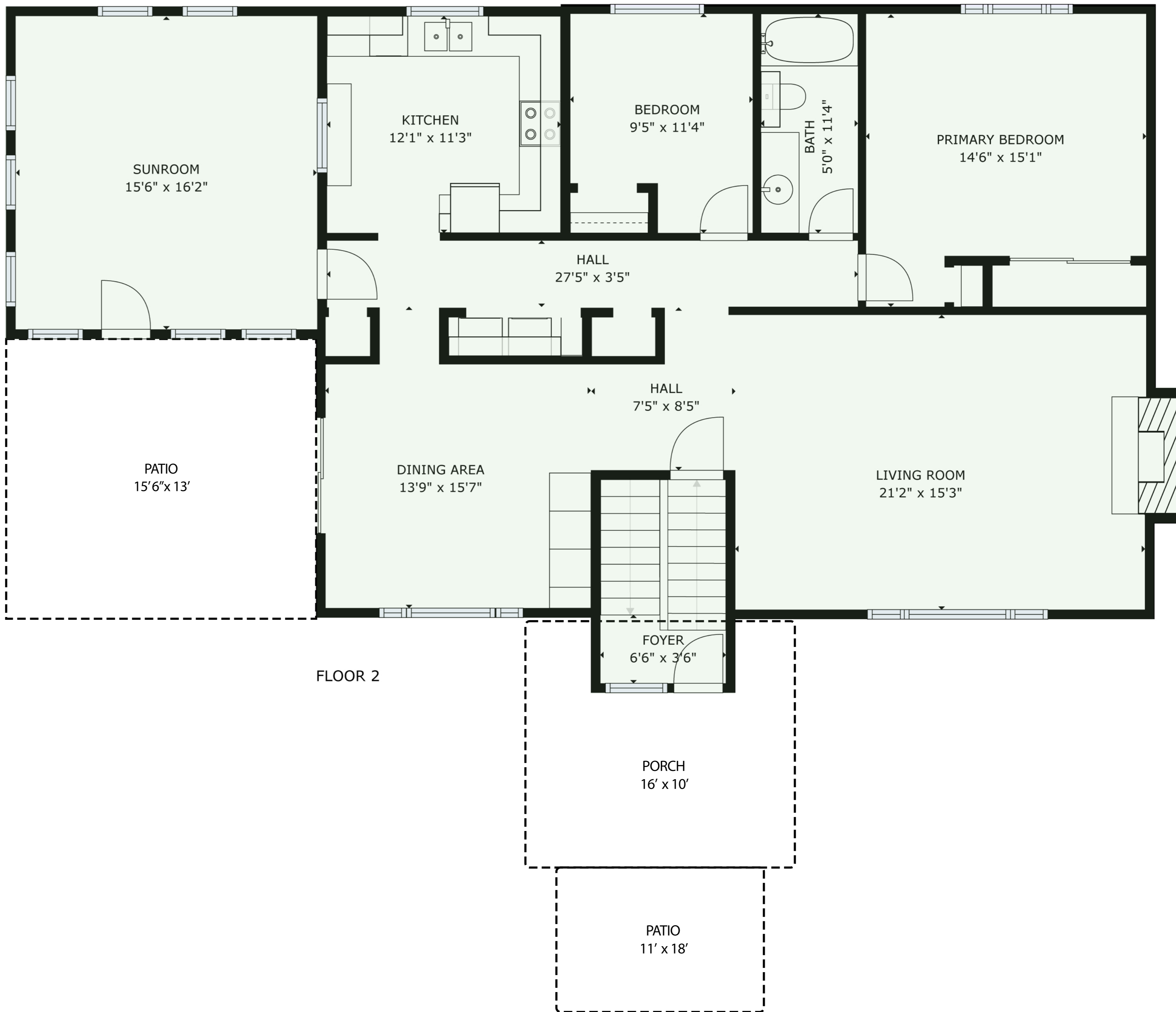
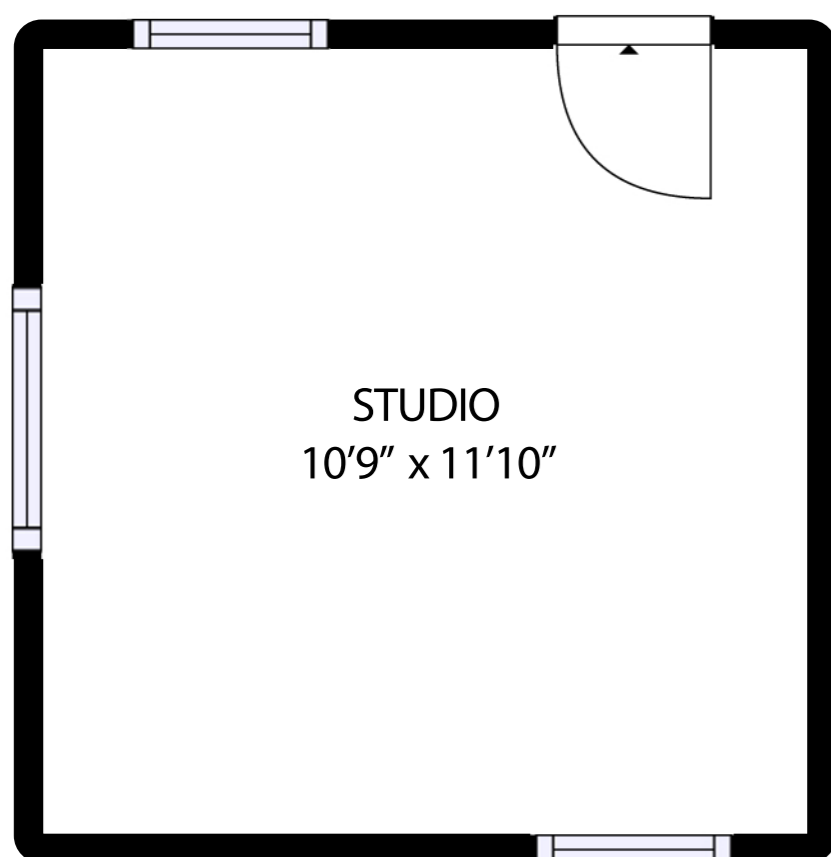
GROSS INTERNAL AREA

FLOOR 1	1400 sq.ft
CEILING HEIGHT	8ft
FLOOR 2	1625 sq.ft
CEILING HEIGHT	8ft

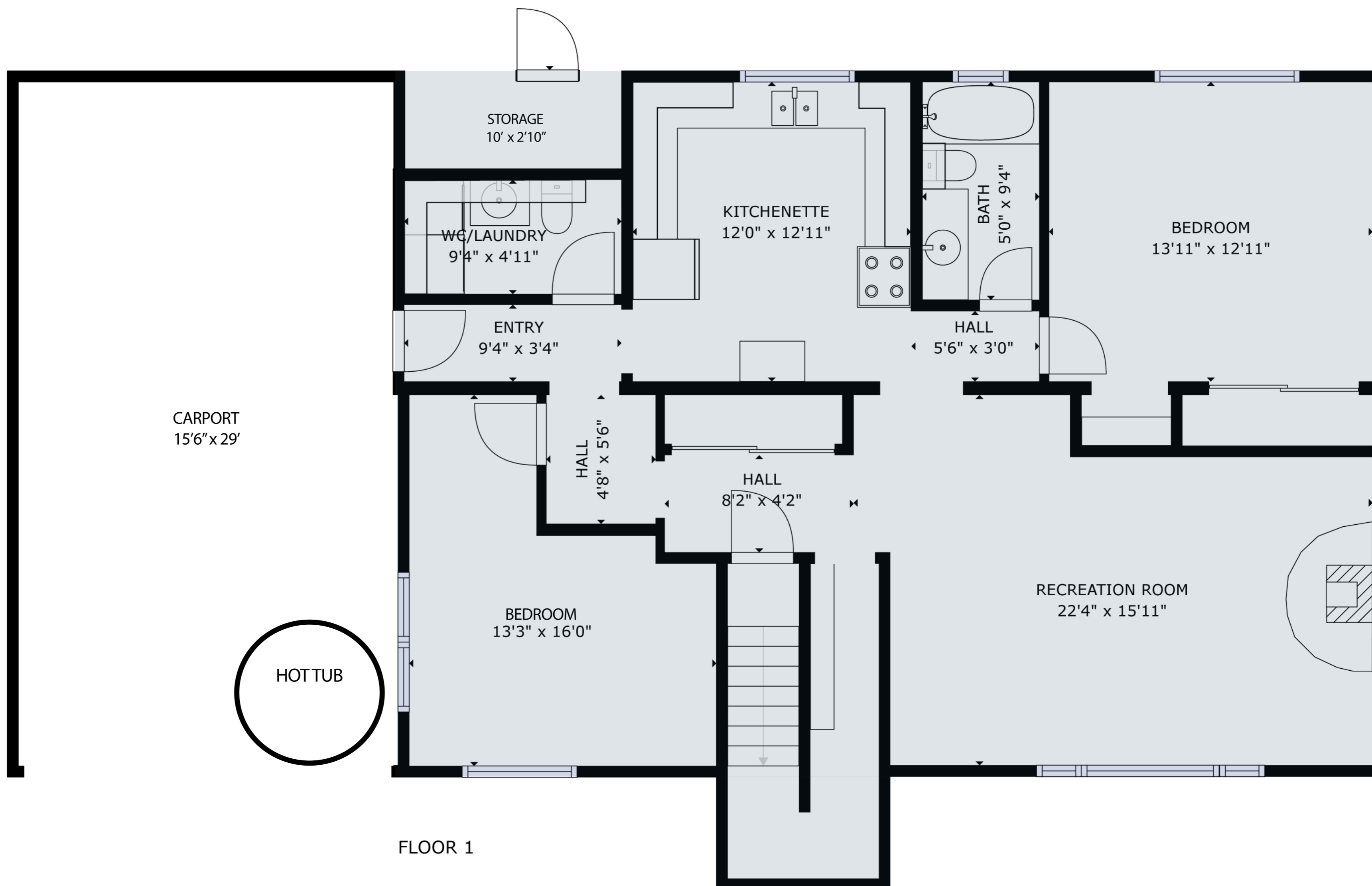
**FINISHED SQFT TOTAL 3025 sq.ft**

EXCLUDED UNFINISHED SQFT

PATIOS	560 sq.ft
CAR PORT	435 sq.ft
STUDIO	110 sq.ft
STORAGE	20 sq.ft



FLOOR 2



FLOOR 1