

2215 RIVIERA PL

LANGFORD, B.C.

5 BEDROOMS

5 BATHROOMS

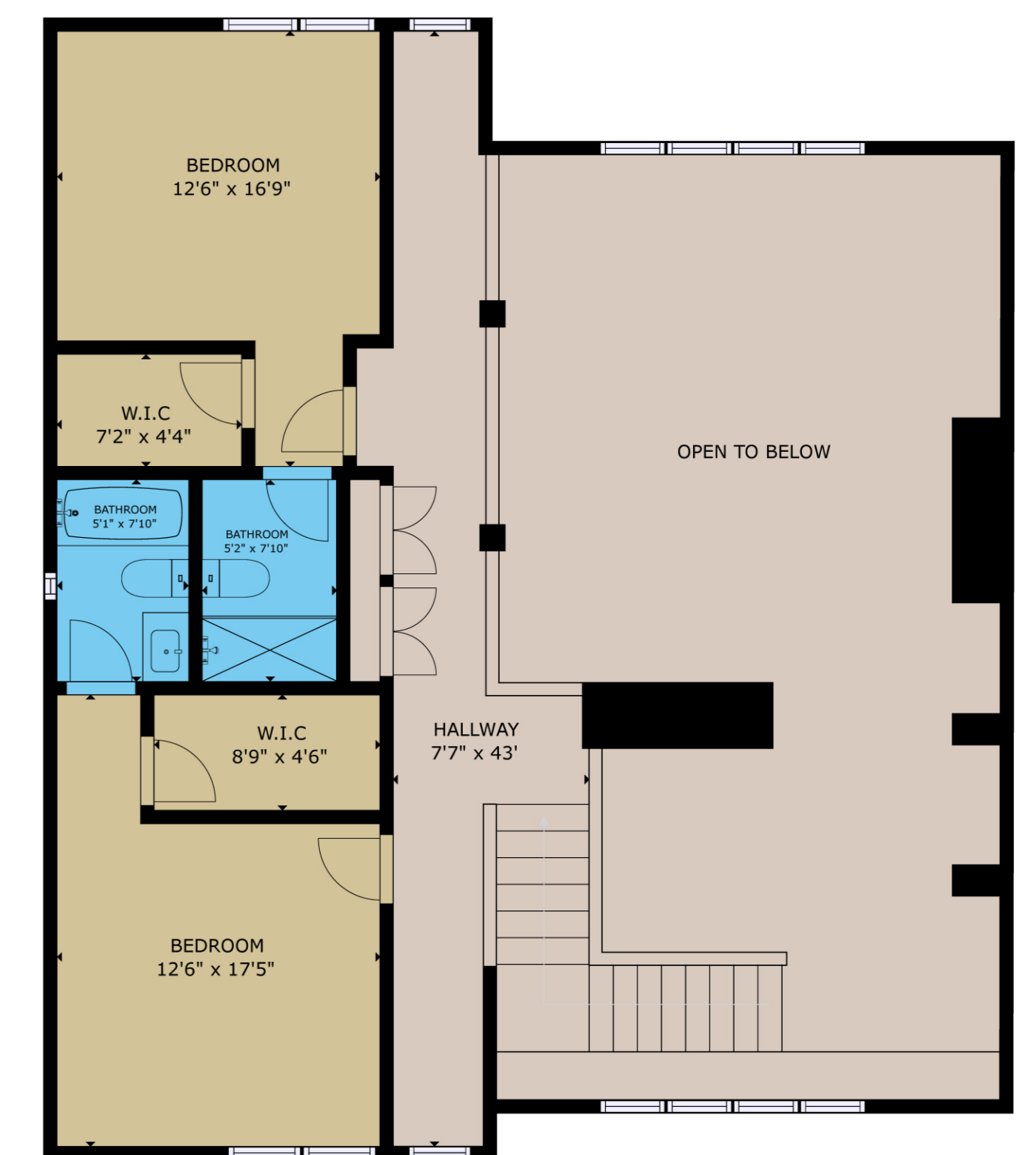
4688 SQ FT



FLOOR 1



FLOOR 2



FLOOR 3

GROSS INTERNAL AREA

FLOOR 1	1562 sq.ft
CEILING HEIGHT	9ft
FLOOR 2	2245 sq.ft
CEILING HEIGHT	9-20ft
FLOOR 3	881sq.ft
CEILING HEIGHT	9ft

TOTAL FINISHED SQFT 4688 sq.ft

EXCLUDED SQFT

PATIO /BALCONY	1371 sq.ft
GARAGE	607 sq.ft
STORAGE	640 sq.ft

SIZES AND DIMENSIONS ARE APPROXIMATE, ACTUAL MAY VARY.



Sotheby's Canada
INTERNATIONAL REALTY

Brad Maclaren
250.727.5488
www.bradmaclaren.com

PREPARED FOR THE EXCLUSIVE USE OF
BRAD MACLAREN PREC*