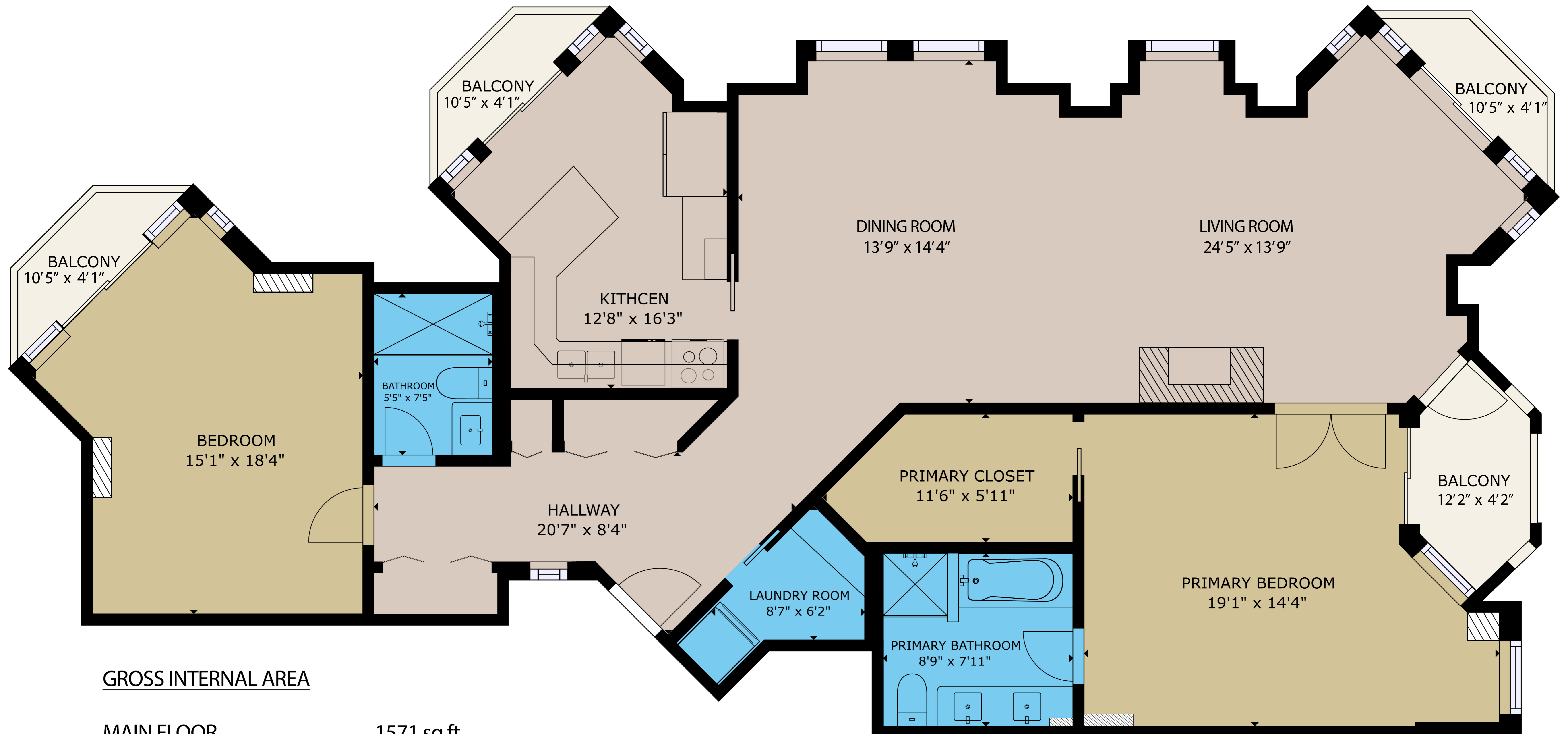


518-10 PAUL KANE PL

VICTORIA, B.C.

 2 BEDROOMS  2 BATHROOMS  1571 SQ FT

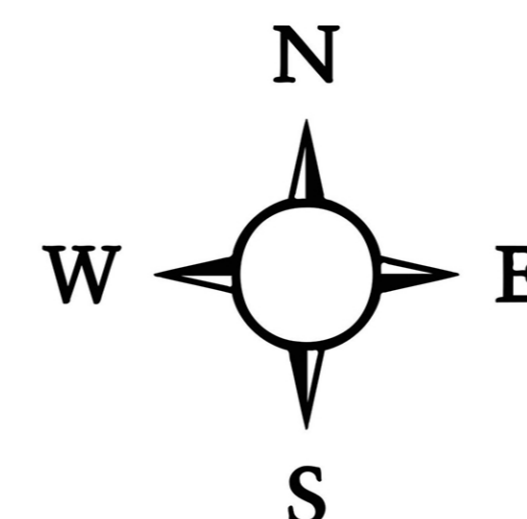


GROSS INTERNAL AREA

MAIN FLOOR 1571 sq.ft  
CEILING HEIGHT 10'ft

**TOTAL FINISHED SQFT 1571 sq.ft**

UNFINISHED SQFT  
BALCONYS 180 sq.ft



SIZES AND DIMENSIONS ARE APPROXIMATE, ACTUAL MAY VARY.

**Sotheby's** | Canada  
INTERNATIONAL REALTY

**Brad Maclaren**  
250.727.5488  
www.bradmaclaren.com

PREPARED FOR THE EXCLUSIVE USE OF  
BRAD MACLAREN PREC.